
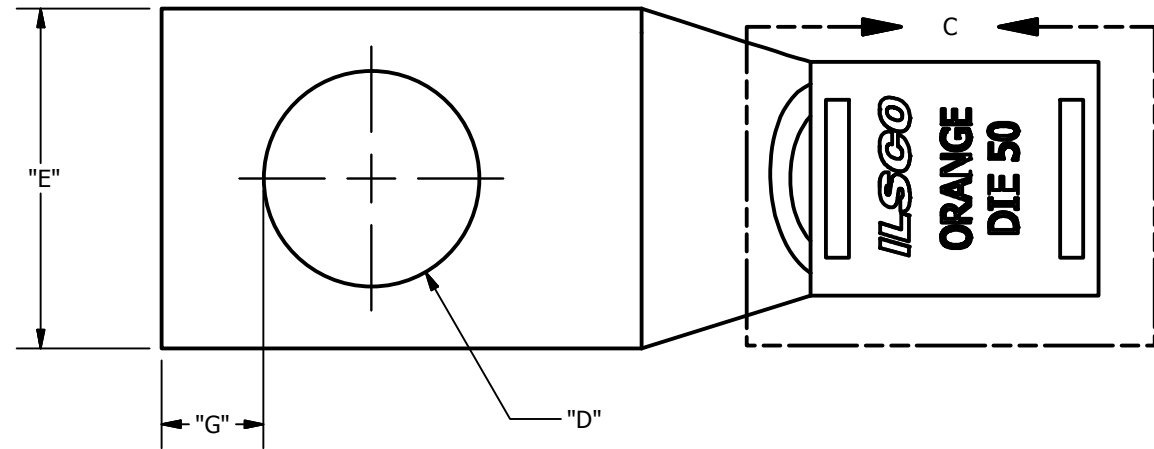


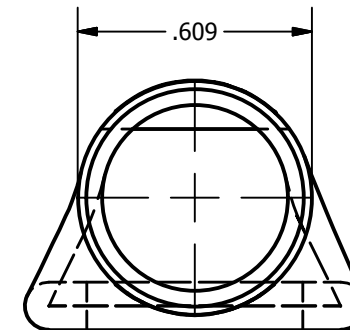
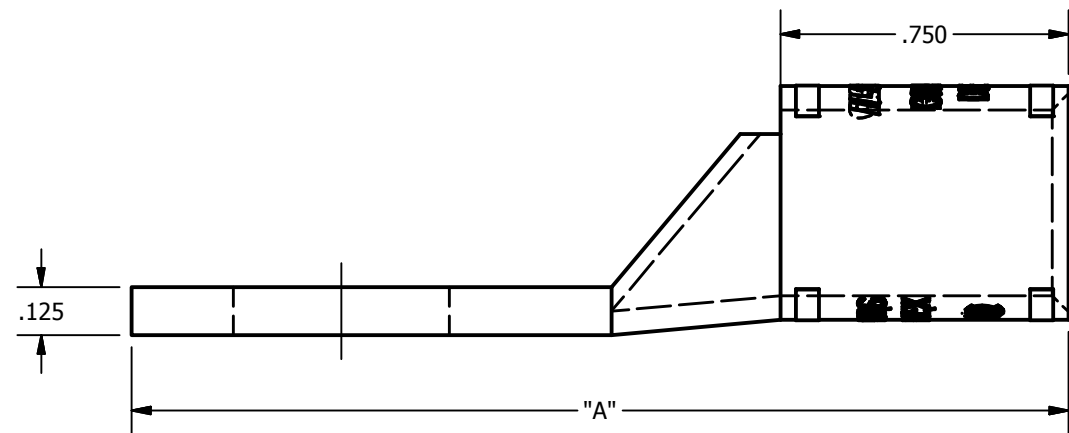
| | | | |
|----------------------------|--------------------|------------------------|--|
| SCREW: NONE | MATERIAL: COPPER | REV: K |  800-776-9775 www.ilSCO.com |
| CAT. NO.: SEE CHART | PLATING: EL-TIN | DRAWN BY:DW SCALE: NTS | |
| INFORMATION SHEET:FORM 157 | MARKING: SEE CHART | DATE:8/6/2007 SIZE: B | |
| | | | DWG NO: Y0911-S |
| | | | SHEET: 1 OF 1 |



DETAIL C
TOP INK MARKING
INK COLOR: ORANGE PLT9 #115
HARDENER: PLH
PER SPEC #: F921



DETAIL D
BOTTOM INK MARKING
INK COLOR: ORANGE PLT9 #115
HARDENER: PLH
PER SPEC #: F921



| Catalog Number | "A" | "D" | "E" | "G" | TANG MARKING |
|----------------|-------|-------|-------|-------|---|
| CSWS-3/0-10 | 1.751 | 0.219 | .885 | 0.148 | UL, ILSCO, CSA, CSWS-3/0-10, 3/0 AWG, 2/0 FLEX, DIE 50 |
| CSWS-3/0-14 | 2.064 | 0.281 | .885 | 0.180 | UL, ILSCO, CSA, CSWS-3/0-14, 3/0 AWG, 2/0 FLEX, DIE 50 |
| CSWS-3/0-516 | 2.064 | 0.343 | .885 | 0.180 | UL, ILSCO, CSA, CSWS-3/0-516, 3/0 AWG, 2/0 FLEX, DIE 50 |
| CSWS-3/0-38 | 2.064 | 0.406 | .885 | 0.211 | UL, ILSCO, CSA, CSWS-3/0-38, 3/0 AWG, 2/0 FLEX, DIE 50 |
| CSWS-3/0-12 | 2.439 | 0.562 | .885 | 0.265 | UL, ILSCO, CSA, CSWS-3/0-12, 3/0 AWG, 2/0 FLEX, DIE 50 |
| CSWS-3/0-58 | 2.626 | 0.656 | .885 | 0.343 | UL, ILSCO, CSA, CSWS-3/0-58, 3/0 AWG, 2/0 FLEX, DIE 50 |
| CSWS-3/0-34 | 2.876 | 0.781 | .969 | 0.359 | UL, ILSCO, CSA, CSWS-3/0-34, 3/0 AWG, 2/0 FLEX, DIE 50 |
| CSWS-3/0-716 | 2.064 | 0.468 | 0.885 | 0.180 | UL,ILSCO,CSA, CSWS-3/0-716, 3/0 AWG, 2/0 FLEX, DIE 50 |